

MONTHLY MEMBERSHIP PROGRESS REPORT

District 8 N

Results as of: 5/31/2020

GMT:

LOCATION LOUISIANA

GMT CA

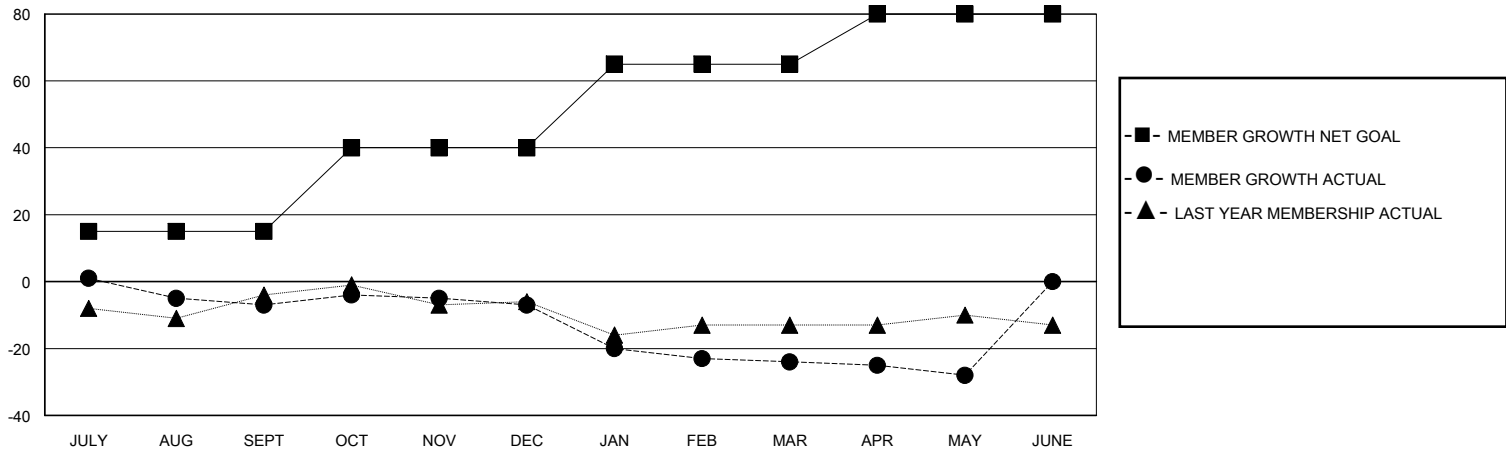
| Clubs | | | |
|-----------------------|---------------|-----------|---------------|
| RESULTS FOR 2019-2020 | | | |
| QUARTER | NEW CLUB GOAL | NEW CLUBS | DROPPED CLUBS |
| JULY/AUG/SEPT | 0 | 0 | 0 |
| OCT/NOV/DEC | 0 | 0 | 0 |
| JAN/FEB/MAR | 1 | 0 | 0 |
| APR/MAY/JUNE | 0 | 0 | 0 |

| Members | | | |
|-----------------------|------------------------|----------------------|--|
| RESULTS FOR 2019-2020 | | | |
| QUARTER | MEMBER GROWTH NET GOAL | MEMBER GROWTH ACTUAL | DROPPED MEMBERS ACTUAL (including transfers) |
| JULY/AUG/SEPT | 15 | 13 | 19 |
| OCT/NOV/DEC | 25 | 9 | 9 |
| JAN/FEB/MAR | 25 | 14 | 29 |
| APR/MAY/JUNE | 15 | 0 | 4 |

GOALS AND ACTUAL NEW CLUBS CUMULATIVE



GOALS AND ACTUAL MEMBERS CUMULATIVE



DROPPED CLUBS: 0

18 CLUBS OF 36 ADDED 1 OR MORE NEW MEMBERS

GENDER DISTRIBUTION

MALE 687 (74.03%)
FEMALE 241 (25.97%)

DROPPED MEMBERS

| | |
|----------------|-----------|
| DECEASED | 9 |
| CLUB CANCELLED | 0 |
| OTHER | 52 |
| TOTAL | 61 |

[CLICK HERE FOR CUMULATIVE MEMBERSHIP DATA](#)

| | |
|---------------------------------|-----|
| TOTAL FAMILY UNIT MEMBERS | 152 |
| FAMILY MEMBERS PAYING HALF DUES | 80 |